



# Fosse Green Energy

EN010154

## 6.3 Environmental Statement Appendices

Appendix 7-E: Historic Landscape Character Assessment

---

VOLUME

6

---

---

Planning Act 2008 (as amended)

Regulation 5(2)(a)

Infrastructure Planning (Applications: Prescribed  
Forms and Procedure) Regulations 2009 (as  
amended)

18 July 2025

---

## Planning Act 2008

### The Infrastructure Planning (Applications: Prescribed Forms and Procedure) Regulation 2009 (as amended)

#### Fosse Green Energy Development Consent Order 202[ ]

---

#### **6.3 Environmental Statement Appendices**

#### **Appendix 7-E: Historic Landscape Character Assessment**

---

Regulation Reference	Regulation 5(2)(a)
Planning Inspectorate Scheme Reference	EN010154
Application Document Reference	EN010154/APP/6.3
Author	Fosse Green Energy Limited

<b>Version</b>	<b>Date</b>	<b>Issue Purpose</b>
Rev 1	18 July 2025	DCO Submission

---

## CONTENTS

1.	INTRODUCTION	4
2.	METHODOLOGY	6
3.	HISTORIC LANDSCAPE CHARACTER	10
4.	CONCLUSIONS	19
5.	REFERENCES	21
	ANNEX A: LINCOLNSHIRE HLC CHARACTER TYPES	22
	ANNEX B: HISTORIC ORDNANCE SURVEY MAPPING	23
	ANNEX C: FIGURES	24

## ILLUSTRATIONS

Figure 7-E-1: Site Location Plan

Figure 7-E-2: HLC Character Areas within the Principal Site

Figure 7-E-3: Important Hedgerows

---

## EXECUTIVE SUMMARY

**Project Name:** Fosse Green Energy

**Location:** Lincolnshire

**NGR:** 495346 , 359782 (approximate centre of the DCO Site)

In January 2025, Cotswold Archaeology was commissioned by Fosse Green Energy Limited (the 'Applicant') to undertake a Historic Landscape Character (HLC) Assessment in respect of Fosse Green Energy Development Consent Order (DCO). The DCO Site is located approximately 9km south and south west of Lincoln City centre and comprises an area of approximately 1,368ha. The Proposed Development will comprise the construction, operation and maintenance, and decommissioning of a solar photovoltaic electricity generating facility, with an on-site Battery Energy Storage System and other associated infrastructure, along with a connection to the national transmission network at the proposed National Grid substation near Navenby (the substation itself does not form part of the Proposed Development and is subject to a separate application).

This report has assessed the HLC of the Principal Site (as the HLC would not be altered within the Cable Corridor). These land parcels lie within the Fosse Valley and The Valley Fens Character Zones, as identified by the Lincolnshire Historic Landscape Character (HLC) assessment. This assessment further categorised the land parcels into the 'Fields and Enclosed Land Broad HLC Type', and several character types. This includes Parliamentary Planned Enclosure, Private Planned Enclosure, and Re-organised Piecemeal Enclosure character types which are of some limited heritage interest. However, they are common within the wider landscape and are well recorded on historic mapping. As such, they are of insufficient interest to comprises non-designated heritage assets in their own right or as a collection. The Modern Fields and Paddocks and Closes character types were also identified within the Principal Site. These are of no heritage value.

In addition to the broad character types, several hedgerows within the DCO Site were identified in accordance with the archaeology and history criteria of the Hedgerows Regulations 1997. Areas with interconnected hedgerows that reflect the field pattern at the time of enclosure have some evidential value and thus these 'important hedgerows' comprise non-designated heritage assets of low value. However, isolated hedgerows have very limited interest.

---

The Proposed Development will retain the individual land parcels with limited alteration. Therefore, the element of the historic landscape with the greatest interest will not be harmed by the Proposed Development. While the Proposed Development would change the broad character of the historic landscape, it is of such limited interest (significance) that this would not result in a material effect.

---

## 1. INTRODUCTION

- 1.1. In January 2025, Cotswold Archaeology was commissioned by Fosse Green Energy Limited (the ‘Applicant’) to undertake a Historic Landscape Character Assessment in respect of a Development Consent Order (DCO) application for Fosse Green Energy (hereafter referred to as ‘the Proposed Development’). The DCO Site is located approximately 9km south and south west of Lincoln City centre and comprises an area of approximately 1,368ha, extending from Bassingham to the west, Thorpe on the Hill to the north and to just beyond Navenby in the east (see 1).
- 1.2. The Proposed Development will comprise the construction, operation and maintenance, and decommissioning of a solar photovoltaic (PV) electricity generating facility, with an on-site Battery Energy Storage System (BESS) and other associated infrastructure, with a total capacity exceeding 50 megawatts (MW), along with an import and export connection to the national transmission network at the proposed National Grid substation near Navenby (the substation itself does not form part of the Proposed Development and is subject to a separate application).
- 1.3. The ‘Principal Site’ includes PV Areas, the interconnector corridors that connect these PV Areas, BESS and the Onsite Substation. The ‘Cable Corridor’ refers to the cable corridor that will connect the Onsite Substation to a new substation in the Navenby area (not part of this DCO application), approximately 10km to the south east of the Principal Site (see **Figure 7-E-1: Site Location Plan [EN010154/APP/6.3]**).
- 1.4. This assessment forms a Technical Appendix to **Chapter 7: Cultural Heritage** of the Environmental Statement (ES) **[EN010154/APP/6.1]** prepared for the Proposed Development. It should be read in conjunction with the other assessments that form the appendices of **Chapter 7: Cultural Heritage** of the ES **[EN010154/APP/6.1]**. These have been referred to where appropriate below.

### *Aims and objectives*

- 1.5. This report focuses on historic landscape within the Principal Site. The assessment of the historic landscape character along the Cable Corridor is excluded as due to the below-ground nature of the development in this area, there would be no above-ground changes to the historic landscape.
- 1.6. The report includes an assessment of the character of each individual field, consideration of any surviving historic landscape features (i.e. earthworks), and a

---

determination of the heritage significance of each landscape character type. The impact of the Proposed Development on the significance of the historic landscape and its component parts, including important hedgerows, is then assessed.

1.7. The objectives which contribute to the overarching aims are as follows:

- a. To determine the historic landscape character within the Principal Site, based on agreed Historic Landscape Character (HLC) methodologies and the established Lincolnshire HLC types;
- b. To assess the heritage significance of the HLC types within the Principal Site;
- c. To identify any important hedgerows within the Principal Site and Cable Corridor, based on the archaeology and history criteria of the Hedgerows Regulations 1997; and
- d. To assess the impact of the Proposed Development on the significance of the historic landscape character, and its features and elements.

#### ***Professional standards***

1.8. Cotswold Archaeology is a Registered Organisation with the Chartered Institute for Archaeologists (CIfA). This report has been prepared with reference to the appropriate standards and guidance, including the 'Standard and Guidance for Historic Environment Desk-Based Assessment' published by CIfA in 2014 and most recently updated in 2020.

#### ***Statute, policy and guidance context***

1.9. The DCO Site lies within the county of Lincolnshire, within the administrative area of North Kesteven District Council. The Central Lincolnshire Local Plan was adopted by the Central Lincolnshire Joint Strategic Planning Committee (CLJSPC) on 13 April 2023, and it now replaces the Local Plan adopted in 2017 (Central Lincolnshire Local Plan 2023). The policy covering the historic environment is Policy S57 of the document.

1.10. The key document which guided the identification of 'important' hedgerows which meet the archaeology and history criteria is the Hedgerows Regulations (1997), which provides protection for 'important' hedgerows within the countryside, controlling their alteration and removal by means of a system of statutory notification.

1.11. This assessment has been undertaken within the key statute, policy and guidance context presented within **Appendix 7-A Cultural Heritage Policy and Legislation** of the ES [EN010154/APP/6.3] and it is not repeated here.



---

## 2. METHODOLOGY

### *Data collection*

- 2.1. This assessment has been informed by the heritage assessments compiled as part of the baseline studies for the proposed development. These form appendices to the **Chapter 7: Cultural Heritage** of the ES [EN010154/APP/6.1] as follows:

- a. Appendix 7-B: Cultural Heritage Desk-Based Assessment
- b. Appendix 7-C: Known Heritage Assets
- c. Appendix 7-D: Detailed Heritage Asset Setting Assessment
- d. Appendix 7-F: Aerial Photographic and LiDAR Assessment
- e. Appendix 7-G: Geophysical Survey Report

- 2.2. These assessments provide sufficient information to determine the historic landscape character for the Principal Site and as such, no additional data collection was conducted. The information contained within these reports has informed the below discussion, however it is not the intention to repeat this information. Accordingly, the individual reports should be consulted for detailed background information and analysis.

### *Historic Landscape Character assessment methodology*

- 2.3. The methodology employed for HLC assessments was established by English Heritage (now Historic England) and is detailed within the *Historic Landscape Characterisation Template Project Design* (2002). This document dictates that historic mapping, aerial photographs and, where available, documentary evidence should be assessed to determine landscape character types. A HLC assessment aims to identify the current character of a landscape, and evidence of past character, where this survives.
- 2.4. Between 2008 and 2011, Lincolnshire County Council undertook a HLC assessment (2011) which divided the county into Character Areas, and individual Character Zones. The project also identified a set of 'Broad HLC Types' and more detailed 'HLC types'. Whilst this comprehensive characterisation was carried out across the whole county, only the Character Area and Character Zone data is available for the DCO Site. As such, this assessment provides a detailed analysis of the landscape character for individual fields within the Principal Site.



- 
- 2.5. This assessment has been produced in accordance with the above methodologies, and uses the information available from historic mapping, aerial photography, lidar analysis, and desk-based review to assign Broad HLC Types and the more detailed HLC types to each field within the Principal Site. The character typologies established in the Lincolnshire HLC (as detailed in Annex A) have been used in this assessment as these were deemed the most appropriate for the local landscape. However, where appropriate, further sub-categories have been identified which provided further analysis on the character of the fields within the Principal Site.
- 2.6. Thus, the following categories have been adopted here, to main consistency with the Lincolnshire County Council work, in descending order of scale / size:
- a. Character Areas (i.e. Trent Valley);
  - b. Character Zones (i.e. the Fosse Way and The Valley Fens);
  - c. Broad HLC Types ('fields');
  - d. HLC types (i.e. Parliamentary enclosure, etc.);
  - e. HLC sub-type;
  - f. HLC elements and features (such as an individual hedgerow).
- 2.7. For each field the following information was compiled:
- a. Character on Tithe/estate mapping;
  - b. Changes in the 19th and 20th century Ordnance Survey (OS) mapping;
  - c. Cropmarks or earthworks identified in the Aerial Photographic and LiDAR Assessment);
  - d. Geophysical survey anomalies;
  - e. Any identified archaeological remains held by the Historic Environment Record (HER);
  - f. Current land use.
- 2.8. This data (provided in Annex B) was then reviewed and the appropriate Broad and detailed HLC Types determined.

### ***Assessment of heritage significance***

- 2.9. The heritage significance of the historic landscape within the Principal Site has been assessed and described, in accordance with paragraph 207 of the NPPF (2024), the guidance issued by ClfA (2020), Historic Environment Good Practice Advice in Planning Note 2 (Historic England 2015), Advice Note 12: Statements of Heritage Significance: Analysing Significance in Heritage Assets (Historic England 2019) and

---

Advice Note 17: Planning and Archaeology (Historic England 2022). Determination of significance has been undertaken according to the industry-standard guidance on assessing heritage value provided within Conservation Principles (English Heritage 2008). This approach considers heritage significance to derive from a combination of discrete heritage values, principal amongst which are: i) evidential (archaeological) value, ii) historic (illustrative and associative) value, iii) aesthetic value, and iv) communal value, amongst others. Further detail of this approach, including the detailed definition of those aforementioned values, as set out, and advocated, by Historic England, is provided within **Appendix 7-A: Cultural Heritage Policy and Legislation** of the ES [EN010154/APP/6.3].

### ***Assessment of potential development effects (benefit and harm)***

- 2.10. The present report sets out, in detail, the ways in which the historic landscape character might be affected by the proposals, as well as the anticipated extent of any such effects. Historic landscape character is not a component of the historic environment protected under the Ancient Monuments and Archaeological Areas Act (1979) or the Planning (Listed Buildings and Conservation Areas) Act 1990. Accordingly, character types that possess sufficient heritage significance may comprise non-designated heritage assets. In the context of the DCO application, the key applicable policy is paragraph 5.9.33 of the Overarching National Policy Statement (NPS) for Energy (EN-1), which states that:

*'In weighing applications that directly or indirectly affect non-designated heritage assets, a balanced judgement will be required having regard to the **scale of any harm or loss and the significance of the heritage asset** [our emphasis].'*

- 2.11. Thus, this assessment seeks to identify the significance of the heritage asset(s), in this instance historic landscape character types and their component elements and features, which may be affected, and the scale of any harm or loss to that significance.

### ***Limitations of the assessment***

- 2.12. This assessment comprises a desk-based study and has utilised secondary information derived from a variety of sources, only some of which have been directly examined for the purpose of this assessment. The assumption is made that this data, as well as that derived from secondary sources, is reasonably accurate.

- 
- 2.13. Historic mapping which predates the 1st edition Ordnance Survey (OS) map, i.e. 18th /19th century estate maps and 1840s tithe mapping, is not available for the entirety of the DCO Site. This is one of the sources used to determine if the hedgerows within the DCO Site qualify as ‘important’ under the archaeology and history criteria of the Hedgerows Regulations 1997 (see **Appendix 7-A Cultural Heritage Policy and Legislation** of this ES [EN010154/APP/6.3]. With no historic maps which pre-date OS mapping available, criterion 5 of Schedule 1 part II of the Regulations could not be applied in those areas of the DCO Site. Where no such mapping exists, only hedgerows which meet the remaining criteria of the Regulations have been identified as important under the archaeology and history criteria.
- 2.14. The current land use of each field has been determined through satellite images available on Google Earth and a site walkover of each field has not been conducted. Any recent changes to land use will therefore not have been captured, however, it is understood that no such changes have occurred.

---

### 3. HISTORIC LANDSCAPE CHARACTER

- 3.1. In 2011 the Historic Landscape Character (HLC) project for Lincolnshire was published by Lincolnshire County Council. The HLC endeavours to provide an understanding of the present-day landscape in terms of its historical context and development. This identified ten Character Areas within the county, with the DCO Site falling within the Trent Valley Character Area.
- 3.2. The Trent Valley Character Area is predominantly rural in nature (Lincolnshire County Council 2011). The eastern edge is formed by the scarps of the Northern and Southern Cliff (an escarpment running in a general north/south orientation through Central Lincolnshire), whereas the western edge of the area is formed by the River Trent in the north, and by the county boundary in the south. The entire area is characterised by nucleated settlements and isolated farmsteads, and whilst the existing land pattern likely originated during the early medieval period, evidence of this previous character is not generally obvious in the landscape.
- 3.3. The medieval landscape is legible within parts of this Character Area, evident within the linear settlement patterns, long east/west orientated parish and field boundaries, and remains of ridge and furrow earthworks. However, large parts of the medieval landscape have been lost due to subsequent post-medieval enclosure and late 20th century field consolidation (Lincolnshire County Council 2011). The change in character of the agrarian landscape is primarily due to advances in machinery and technology. In addition, there is very limited survival of early prehistoric or Roman land use (either as enclosure boundaries, visible earthworks or buried archaeological remains)
- 3.4. The Lincolnshire HLC project further refined the wider Character Area into four Character Zones, with the Principal Site falling within The Fosse Way and The Valley Fens Zones (see **Figure 7-E-2: HLC Character Areas within the Principal Site [EN010154/APP/6.3]**).
- 3.5. Further refinement of the landscape character assigned 'Broad HLC Types' and 'HLC Types' to specific land parcels. Whilst no specific details of this analysis are available (including how each land parcel was broken down), the HLC report (Lincolnshire County Council 2011) notes that 87.47% of the land within the Trent Valley Character Area was assigned a Broad HLC Character Type of '*fields*'.

### Fosse Way Character Zone

- 3.6. The Fosse Way Character Zone accounts for 7.7% of the Trent Valley Character Area and comprises a mixed landscape of woodland, open water and modern arable farmland (Lincolnshire County Council 2011). The rural landscape is largely dominated by rectilinear arable land parcels, with areas of small irregular pasture located around the villages of Thurlby, Haddington and Aubourn (Lincolnshire County Council 2011).
- 3.7. A total of 113 land parcels in the Principal Site lie within this Character Zone. Further analysis of these land parcels identified that they all fall within the *Fields and Enclosure Land* Broad HLC Type. These were subsequently divided into four HLC types including: *Parliamentary Planned Enclosure*, *Private Planned Enclosure*, *Re-organised Piecemeal Enclosure*, *Modern Fields*. Each of these HLC types were further refined as part of this assessment into categories of *surviving time depth*, where evidence of former medieval or early post-medieval agricultural activity survives as earthworks (i.e. ridge and furrow, plough headlands, remains of medieval settlements), and *no surviving time depth*, where there is no legible evidence of former land use. The breakdown of the land parcels within the Principal Site is provided in **Table 1** below and shown on **Figure 7-E-2: HLC Character Areas within the Principal Site [EN010154/APP/6.3]**.

Broad Type	HLC Type	No. of land parcels	CA sub-group	No. of land parcels
Fields and Enclosed Land	FIE 27 – Reorganised Piecemeal Enclosure	42	No surviving time depth	34
			Surviving time depth	8
	FIE 28 – Parliamentary Planned Enclosure	22	No surviving time depth	19
			Surviving time depth	3
	FIE 29 – Modern Fields	19	No surviving time depth	14
			Surviving time depth	5
	FIE 32 – Private Planned Enclosure	30	No surviving time depth	18
			Surviving time depth	12

**Table 1: HLC assessment of Principal Site within the Fosse Way Character Zone**

### The Valley Fens Character Zone

- 3.8. The Valley Fens Character Zone accounts for 26.8% of the Trent Valley Character Area and is divided into two unequal parts. The Principal Site lies partially within the north of the larger area which is centred on the River Brant. This area is characterised by a scattering of isolated farmsteads set within a predominantly rural landscape and is relatively low lying in elevation (Lincolnshire County Council 2011). The floodplain alongside the river comprises fenland to the east and fields to the west, although areas of former fens survive in proximity to Bassingham which was likely drained during the 18th century (Lincolnshire County Council 2011).
- 3.9. A total of 30 land parcels in the Principal Site lie within the Valley Fens Character Zone. Further analysis of these land parcels was undertaken as part of this assessment (see **Table 2** and **Figure 7-E-2: HLC Character Areas within the Principal Site [EN010154/APP/6.3]**). This identified that all the parcels were agrarian in nature and were assigned to the '*Field and Enclosed Land*' Broad HLC Type. The individual land parcels fell within the following HLC types: *Private Planned Enclosure*, *Re-organised Piecemeal Enclosure*, *Modern Fields*, and *Paddocks and Closes*. As with the HLC Types in the Fosse Way Character Zone, these were again further refined into categories of *surviving time depth* and *no surviving time depth*.
- 3.10. The five land parcels assigned to the *Paddocks and Closes* HLC type comprise the gardens and grounds of Bassingham Low Fields Farm. The nature of this land is not clear; however, it is evident from recent satellite images that whilst they used to form part of the agrarian landscape, they are no longer included within the adjacent arable field and are instead associated with the isolated farmstead.

Broad Type	HLC Type	No. of land parcels	CA sub-group	No. of land parcels
Fields and Enclosed Land	FIE 27 – Reorganised Piecemeal Enclosure	17	No surviving time depth	17
			Surviving time depth	-
	FIE 29 – Modern Fields	1	No surviving time depth	1
			Surviving time depth	-
	FIE 30 – Paddocks and Closes	5	-	-
	FIE 32 – Private Planned Enclosure	7	No surviving time depth	6
			Surviving time depth	1

**Table 2: HLC assessment of Principal Site within the Valley Fens Character Zone**

---

### *HLC types within the Principal Site*

3.11. As identified above the Principal Site comprises the following HLC Types:

- a. Reorganised Piecemeal Enclosure (FIE 27)
- b. Parliamentary Planned Enclosure (FIE 28)
- c. Modern Fields (FIE 29)
- d. Paddocks and Closes (FIE 30)
- e. Private Planned Enclosure (FIE 32)

3.12. The heritage significance of each character is discussed below.

### **Reorganised Piecemeal Enclosure**

3.13. This character type comprises small irregular or rectilinear fields that have lost 10% or more field boundaries since the first edition OS Map. As such they have been subject to change since their original enclosure and reflect 19th and 20th century landscape re-organisation. Whilst large areas of the land within this character type would have formed part of the open field system, evidence of this former use (i.e. surviving ridge and furrow earthworks) has largely been removed through subsequent ploughing activities (these are noted as cropmarks on aerial photography, or geophysical survey anomalies). There are eight isolated land parcels where earthworks of former agricultural land use survive. However, they are widely dispersed within the Principal Site and do not provide a coherent, legible expression of former landscape use.

3.14. Fields 26 and 27 (**Figure 7-E-2: HLC Character Areas within the Principal Site [EN010154/APP/6.3]**) are, however, an exception. They, along with adjacent fields of differing character (Fields 38, 39, and 42-44), evidence former medieval agricultural activity on the outskirts of the settlement at Morton. The survival of a large area of earthworks enables the former medieval character to be understood. As such, the previous historic character within these land parcels is partially legible, and its 'time depth' can be understood. However, the heritage value of these surviving feature is of limited value due to their poor surviving condition and the common nature of medieval agricultural remains within the wider area.

3.15. This landscape character is of limited heritage interest and is well recorded through the cartographic record. As such, it does not represent a non-designated heritage asset.



---

### **Parliamentary Planned Enclosure**

- 3.16. This character type is concentrated within the Fosse Way Character Zone, north of the Fosse Way where the former open landscape was enclosed following the Acts in the 18th and 19th century. The land parcels which lie within this character type have remained largely unaltered since the tithe survey in the 1840s and remain under cultivation. The continued agricultural function of the land and the retention of boundary treatments ensure the historic character remains intelligible.
- 3.17. Whilst each individual land parcel itself is of limited heritage interest, this character is dominant in the north west of the Principal Site (Fields 28 and 30-42), and as such, parts of the original enclosure pattern remain legible within the landscape. In addition, three of these fields (38, 39, and 42) contain evidence of medieval land use enabling the previous historic character to be discerned. This is of some heritage interest.
- 3.18. The survival of the parliamentary planned enclosed fields, and their retained use, enables this historic character to form part of the current landscape. However, this character type is relatively common within the Trent Valley Character Area and thus is of insufficient value to represent a non-designated heritage asset.

### **Modern Fields**

- 3.19. Land within this character type has been identified on historic cartographic sources as formerly comprising smaller parcels of land, most likely defined during parliamentary and private enclosure in the 19th century. By the mid 20th century, field boundaries of the smaller parcels had been removed (many of these former boundaries were detected as anomalies in the geophysical survey), creating larger tracts of land that are typically irregular in shape, but defined by hedgerows. This amalgamation of former smaller fields would have resulted from modern cultivation techniques and technology. Whilst evidence of earlier land use survives within some of the land parcels within this character type, the surviving earthworks are low in profile and not readily legible. This character type is of no heritage interest.

### **Paddocks and Closes**

- 3.20. Land within this character type comprises small parcels located to the north and east of Basingham Low Fields Farm. Satellite images show that up until the early 21st century this land formed part of a separate agricultural field. However, it has since been subdivided into small plots of land which are used as gardens, paddocks etc.

---

No historic features are legible within this character area, and it is of no historic interest.

### Private Planned Enclosure

- 3.21. The Private Planned Enclosure HLC character includes areas of former medieval open fields which were subjected to piecemeal private enclosure. This was largely the case for the land within the Principal Site (Lincolnshire County Council 2011). As per the parliamentary enclosed land, this character of itself is of limited heritage interest. However, where this character dominates in the centre of the Principal Site (Fields 49, 50, 52-55, 58-60 64-69, 105-108, and 110) it enables the enclosure pattern to be understood. The continued agricultural use of these land parcels and the surviving boundaries, provide some heritage interest through its legibility. However, this landscape pattern is well recorded and is fairly common within the wider Character Zones.
- 3.22. A total of 13 land parcels in this character contain evidence of previous land use. This includes medieval settlement remains (Fields 105-106) and agricultural remains (Fields 64, 67, 72, 96-199, 103, 104, and 140). Accordingly, the time depth of these areas is legible, enabling former landscape character to be understood. However, whilst the remains themselves are of heritage value to be considered non-designated heritage assets (as explored in **Appendix 7-A Cultural Heritage Policy and Legislation** of this ES [EN010154/APP/6.3]), this landscape character is of limited interest and is well represented, and recorded, throughout the Trent Valley Character Zone. As such, it does not represent a non-designated heritage asset.

### Important hedgerows

- 3.23. Some of the boundaries within the DCO Site are recorded on the 1838 Tithe map of Thurlby, the 1850 Tithe map of Norton Disney, and the 1848 Tithe map of Aubourn. As such, these hedgerows are defined as ‘important’ hedgerows under the criteria for archaeology and history in The Hedgerows Regulations 1997. In this case, the hedgerows meet criterion 5 which states that ‘[the hedgerow] is recorded in a document held at the relevant date at a Record Office as an integral part of a field system predating the Inclosure Acts’. Some of the hedgerows within the DCO Site also mark part of at least one historic parish boundary, and as such meet criterion 1 of the Regulations which states that ‘[the hedgerow] marks the boundary, or part of the boundary, of at least one historic parish or township; and for this purpose “historic” means existing before 1850’, and are also ‘important’ hedgerows.

---

3.24. Additionally, a small number of the boundaries of land parcels within the DCO Site, sit within or are situated on land adjacent to a Scheduled Monument or an archaeological feature recorded on the Historic Environment Record (HER); namely Hall Close Scheduled Monument (NHLE 1021080), Medieval Field System, Thurlby (MLI85883), Ridge and furrow, south of High Walks Farm (MLI83439), and Medieval ridge and furrow, west of Haddington (MLI83438). These are also defined as important hedgerows under criteria 2 and 3 of the 1997 Regulations. Important hedgerows are shown on **Figure 7-E-3: Important Hedgerows [EN010154/APP/6.3]**.

3.25. These features hold some heritage value, and in particular there is a notable survival of interconnected field boundaries around Hall Close Scheduled Monument and the nearby areas of surviving medieval ridge and furrow to the west of Haddington; in the landscape to the north of Thurlby; and the landscape to the west and south west of Thurlby which incorporates part of a surviving medieval field system (MLI85883). These interconnected field boundaries help to understand the former enclosed landscape pattern, and as such, these areas are considered to be non-designated historic assets of low heritage value. The later 20th century field amalgamation has resulted in a loss of legibility of the former enclosed land patterns in some places, with only isolated hedgerows or small sections surviving, and the former layout cannot be well understood; as such, these isolated hedgerows are not of sufficient heritage value to qualify as non-designated heritage assets. It is normally desirable to emphasise retention of such hedgerows in new development where possible; although removal of elements to facilitate suitable place-making, circulation and access is normally acceptable in heritage terms (without necessarily leading to harm to intelligibility of the hedgerow pattern of the local area).

#### *The Proposed Development*

3.26. The Proposed Development will comprise the construction, operation and maintenance, and decommissioning of a solar photovoltaic (PV) electricity generating facility, with an on-site Battery Energy Storage System (BESS) and other associated infrastructure, with a total capacity exceeding 50 megawatts (MW), along with an import and export connection to the national transmission network at the proposed National Grid substation near Navenby. Its component parts include the following:

- a. Solar PV panels (also known as ‘modules’);
- b. PV panel mounting structures;

- c. BESS;
- d. Inverters;
- e. Transformers;
- f. Switchgear;
- g. An Onsite Substation and control buildings;
- h. Onsite cabling;
- i. Ancillary infrastructure (e.g. combiner boxes, weather stations);
- j. Electricity export and import via high-voltage Grid Connection Cable to the National Electricity Transmission System;
- k. Fencing and security;
- l. Access tracks; and
- m. Landscaping, permissive paths and biodiversity mitigation and enhancement areas.

### Impacts arising from the Proposed Development

- 3.27. In general terms, the introduction of solar panels into arable or pastureland parcels will result in a notable change in character through the introduction of solar arrays, fences, and associated infrastructure (see **Chapter 10: Landscape and Visual Amenity** of this ES [EN010154/APP/6.1]). However, solar farm developments, whilst long-term are, in the context of landscape character, wholly reversible. Furthermore, solar farms generally reflect the prevailing fieldscape, with solar arrays encompassed within existing fields resulting in minimal alterations to existing field patterns and boundaries.
- 3.28. However, vegetation removal along small sections of hedgerows within the DCO Site will be required to facilitate access. This has the potential to result in change to the landscape character.

### Historic Landscape Character

- 3.29. The Proposed Development includes the addition of solar arrays within Fields 1-7, 11-13, 19-32, 34-37, 39, 42-52, 56, 60-62, 67, 68, 70, 72, 82, 85-90, 93, 11-116, 118-122, 129, and 135. These fields form part of the following character types:
- a. Re-organised Piecemeal Enclosure
  - b. Parliamentary Planned Enclosure
  - c. Modern Fields
  - d. Private Planned Enclosure

- 
- 3.30. The Modern Fields HLC type is of no heritage interest. The Re-organised Piecemeal Enclosure, and Parliamentary and Private Planned Enclosure characters are of heritage interest. However, their value is not sufficient to comprise non-designated heritage assets. As such, they do not form a material consideration within the decision-making process.
- 3.31. The proposed solar arrays are fully contained within the existing fields and any boundary loss to account for access is minimal. Whilst the fields with solar PV and associated infrastructure will no longer have arable crops, the historic character will still be legible, and the former arable use can be reinstated following the decommissioning of the solar farm. As such, the historic landscape character of the Principal Site will not be harmed as a result of the Proposed Development.
- 3.32. The Proposed Development would be contained within the existing field boundaries. The Hedgerow Plan **[EN010154/APP/2.9]** shows the removal of small sections of hedgerows within the DCO Site to facilitate suitable place-making, circulation and access, which is normally acceptable in heritage terms (without leading to harm to intelligibility of the hedgerow pattern of the local area). The Proposed Development would therefore have no impact on the historical integrity of historically important hedgerows of the DCO Site.

---

## 4. CONCLUSIONS

- 4.1. This assessment has included a review of a comprehensive range of available sources in order to identify the historic landscape character types within the Principal Site which may be affected by the Proposed Development. The significance of the identified character types has been determined based on available evidence and the potential effects of the proposals have been assessed.
- 4.2. The Principal Site lies within the Fosse Way and Valley Fens Character Zones as identified by the Lincolnshire HLC assessment. The fields within these Zones have been assigned to several HLC types including Parliamentary Planned Enclosure, Private Planned Enclosure, Re-organised Piecemeal Enclosure, Modern Fields, and Paddocks and Closes.
- 4.3. The Modern Fields and Paddocks and Closes characters are of no heritage interest. The remaining character types are of some limited historic interest. However, these are common features in the wider landscape. Accordingly, none of these character types are of sufficient heritage interest to warrant their identification as non-designated heritage assets.
- 4.4. Several of the land parcels within the Principal Site contain medieval earthwork remains which evidence their former character and provide legible time depth. However, whilst some of these remains individually qualify as non-designated heritage assets, the surviving landscape character is of limited interest. The loss or change of character to elements of the historic landscape of limited heritage significance will not result in an adverse impact or harm.
- 4.5. Whilst the agricultural nature of the fields containing the solar arrays and associated infrastructure will change, their historic character will remain legible. In addition, the Proposed Development is temporary and reversible, and the land parcels will be returned to their agricultural use following its decommissioning. Therefore, there will be no permanent alteration to the historic landscape character types within the Principal Site.
- 4.6. The assessment has identified that some of the field boundaries within the DCO Site qualify as 'important' hedgerows under the Hedgerows Regulations 1997. Of these, there are several notable areas of surviving interconnected field boundaries (see Paragraph 3.25) which have been identified as non-designated heritage assets of low

---

heritage value, for the ways in which they reflect and aid in understanding the former enclosed landscape pattern.

- 4.7. Isolated or truncated important hedgerows which are no longer interconnected to a wider surviving network of field boundaries are of some heritage interest but not sufficient to be considered non-designated heritage assets. The Proposed Development would be contained within the existing field boundaries (with the exception of breaches required to facilitate circulation and access) and would therefore have no impact on the historical integrity of historically important hedgerows of the DCO Site.



---

## 5. REFERENCES

AECOM 2024 *Fosse Green Energy Preliminary Environmental Information Report Appendix 7-B: Desk-Based Assessment*; published October 2024

AECOM 2024 *Fosse Green Energy Preliminary Environmental Information Report Appendix 7-D: Air photo and LiDAR Mapping and Interpretation Report*; published October 2024

Chartered Institute for Archaeologists 2020 *Standard and Guidance for Historic Environment Desk-Based Assessment*

Department for Energy Security & Net Zero 2023 *Overarching National Policy Statement for Energy (EN-1)* (Published November 2023)

Historic England 2002 *Historic Landscape Characterisation: Template Project Design*

Lincolnshire County Council 2011 *The Historic Character of The County of Lincolnshire*

The Hedgerows Regulations 1997 (SI No. 1160)

---

## ANNEX A: LINCOLNSHIRE HLC CHARACTER TYPES

## **Broad Types**

### **1. Agriculture - AGR**

Land and buildings used for the rearing of livestock

### **2. Civic and Commercial - CIV**

Land and buildings used for public amenity or administration

### **3. Communications - COM**

Areas where the main function is as part of the communications network

### **4. Extraction - EXT**

Areas where the character is dominated by current or previous mineral and aggregate extraction

### **5. Fields and Enclosed Land - FIE**

Enclosed areas of land primarily used for agriculture

### **6. Historic Earthworks - HEW**

Upstanding archaeological earthwork remains

### **7. Industry - IND**

Areas of industrial or manufacturing activity

### **8. Military – MIL**

Land and Buildings used by the armed forces

### **9. Orchards and Allotments - ORC**

Land used for horticultural purposes

### **10. Parkland - PRK**

Country houses and their associated estates and subsidiary buildings

### **11. Recreational Open Space - ROS**

Recreational space for public use, usually found in or around towns and villages

### **12. Settlement - SET**

Areas where people currently live, or have lived in the past

### **13. Unenclosed Land - UNE**

Areas of unimproved or unenclosed land

### **14. Water and Wetland - WAW**

Areas of open water, marshes and floodplain fields

### **15. Woodland - WDL**

All blocks of woodland 1ha or above in size

## **HLC Types**

### **1. Agricultural - AGR**

#### ***AGR – 01 Livestock Rearing***

Barns or other large agricultural buildings used for sheltering and/or rearing animals

#### ***AGR – 02 Fish Farm***

Pools and associated buildings for commercial fish farming

#### ***AGR – 03 Crop Storage***

Sheds or silos used for the storage of crops

## **2. Civic and Commercial - CIV**

### ***Educational – CIV-04***

Educational establishments such as colleges, universities and larger school complexes.

### ***Religious – CIV-05***

Churches and associated land or buildings. Includes Almshouses and Graveyards.

### ***Medical – CIV-06***

Areas utilised by large medical facilities such as hospitals or health centres.

### ***Municipal – CIV-07***

Public buildings such as council offices and emergency services

### ***Leisure – CIV-08***

Building or group primarily used for recreational or sporting purposes.

### ***Offices – CIV-104***

Office buildings, usually found in an urban setting.

### ***Large Retail Outlets – CIV-105***

Large modern retail developments, such as supermarkets or retail parks.

### ***High Street Shops – CIV-106***

Retail spaces in the centre of a town or village, often resulting from a change of use from residential buildings. Used where several small retail outlets occur outside an Historic Settlement Core.

### ***Car Parks – CIV-110***

Multi storey building in which cars are parked.

### ***Cemeteries – CIV-111***

Areas of land designated for the burial of the dead. This type includes crematoria, but does not include graveyards associated with religious buildings.

### **3. Communications - COM**

#### ***Sidings – COM-09***

Railway features such as sidings or goods-yards.

#### ***Cuttings and Embankments – COM-10***

Railway features created for the continuation of railway tracks across relatively higher or lower ground.

#### ***Public Transport Station – COM-11***

Railway or bus stations usually found in or near settlements. These will often include associated car-parks

#### ***Canal Lock/Basin – COM-12***

This category defines canal locks, basins, wharfs and marinas marked on the current 1:10,000 OS map if this is the Current Character and marked on earlier OS editions if this is the Previous Character.

#### ***Service Station – COM-13***

Service areas typically associated with motorways and the larger trunk roads and marked on the modern OS map base.

#### ***Civil Airports/Airfield – COM-14***

Airports and airfields in civil use. A number of these will have formally been for military use and given over to civil use after the Second World War.

#### ***Junction – COM-15***

This category defines major road junctions marked on the current 1:10,000 OS map.

#### **4. Extraction - EXT**

##### ***Limestone Quarry – EXT-16***

Active or Inactive feature associated with the extraction of limestone, typically as a building material.

##### ***Reinstated Land – EXT-17***

Used as a previous type where an intermediate stage of landfill cannot be reliably used, for example when reinstatement occurs before c.1950

##### ***Clay Pit – EXT-18***

Active or inactive feature associated with the extraction of clay for brick or tile making. This type is intended for use where processing of the extracted material is undertaken elsewhere.

##### ***Sand and Gravel Quarry – EXT-19***

Active or inactive feature associated with the extraction of sands and gravels.

##### ***Ironstone Quarry – EXT-20***

Active or Inactive feature associated with the extraction of material for the production of iron.

##### ***Chalk Pit – EXT-21***

Active or inactive feature associated with the extraction of chalk.

##### ***Landfill – EXT-22***

Indicates a former quarry that is used for the disposal of commercial, industrial or domestic waste. This can be encountered as a current type where the process is ongoing, or as a previous type when reinstatement is complete.



## **5. Fields and Enclosed Land - FIE**

### ***Estate Fields – FIE-24***

This type is a result of the transformation of landscaped parks or deer parks to agricultural use. This is usually seen in the 20<sup>th</sup> century, and may be seen as a variation on the Modern Fields type.

### ***Ancient Enclosure – FIE-25***

Pre-18th century enclosures of former open fields or common grazing land. Field morphology of this type may be used to infer the previous type.

### ***Strip Fields – FIE-26***

This category identifies areas which are likely to have formed part of medieval open fields, the presence of which can be suggested through the presence of ancient enclosure or ridge and furrow earthwork remains.

### ***Re-organised Piecemeal Enclosure – FIE-27***

Small irregular or rectilinear fields that have lost 10% or more field boundaries since the 1st ed 6" map, or areas of large irregular or rectilinear fields. In both cases at least two field boundaries will have an 's-curve' or 'dog-leg' morphology.

### ***Parliamentary Planned Enclosure – FIE-28***

Highly rectilinear field patterns resulting from the enclosure of common land and open fields by act of parliament. This type of landscape is predominantly 18th/19th century, although some earlier examples may exist.

### ***Modern Fields – FIE-29***

Typically post WW2 reorganisation of agricultural land, resulting in large fields exhibiting significant boundary loss from 1<sup>st</sup> Ed Ordnance Survey.

### ***Paddocks and Closes – FIE-30***

These small fields are usually seen at the edge of settlements, possibly indicating small scale enclosure by agreement, or the re-use and agglomeration of derelict housing plots.

### ***Private Enclosure from Woodland – FIE-31***

Small irregular or rectilinear fields which appear to have been created through woodland clearance. Typically these will border or occur close to areas of ancient woodland.

### ***Private Planned Enclosure – FIE-32***

Similar to the Parliamentary Planned Enclosure type, in that it is characterised by a highly rectilinear pattern of boundaries. Differs in that it is not the result of an act of parliament.

## **6. Historic Earthworks - HEW**

### ***Saltern Earthworks – HEW-33***

Earthwork remains associated with the production of salt from seawater.

### ***Medieval Village Earthworks – HEW-34***

Earthworks interpreted as the remains of vernacular medieval settlement. This type can be used to demonstrate shrinkage or desertion, and is associated with Historic Settlement Core as a previous type.

### ***Medieval High Status Residence – HEW-35***

Earthworks identified as the remains of a high status residence. Many examples are moated. Typically seen at the edge of a medieval settlement, and identifiable from Aerial Photographs, map data or HER/SMR records

### ***Medieval Religious Complex – HEW-36***

Earthworks associated with a medieval religious foundation.

### ***Prehistoric Earthworks – HEW-96***

Earthwork remains dating from pre-Medieval periods. Identified from HER records.

## **7. Industrial-IND**

### ***Other Industrial Works – IND-37***

This category includes water treatment plants, power stations and other utilities.

### ***Other Factory – IND-38***

Manufacturing facility, usually identified from OS mapping, that does not allow a more specific interpretation.

### ***Docks, Wharves and Havens – IND-39***

Facilities for loading and unloading waterborne cargo.

### ***Warehouses and Distribution – IND-40***

Facilities used for temporary storage and /or distribution of goods. Typically characterised by larger buildings and car parks, often situated away from main settlements

### ***Derelict Industrial Land – IND-41***

Former industrial sites which have been cleared and had no subsequent development on them.

### ***Brick and Tile Works – IND-42***

Industrial facilities for manufacturing bricks and tiles. Raw material for the process is often extracted on site, resulting in characteristic ponds.

### ***Saltern – IND-44***

Previous type showing former industrial salt production up to the Late Medieval period

### ***Chemical Works – IND-45***

Large industrial developments related to the petro-chemicals industry, including storage tanks, refineries and flare towers.

### ***Industrial Estate – IND-46***

Modern complex of industrial buildings, often found at the edge of settlements.

### ***Car Storage – IND-47***

Areas of hard standing where cars and other small vehicles are stored prior to export, or between import and sale.

## **8. Military - MIL**

### ***Missile Base – MIL-48***

Facilities for the basing and operation of offensive or defensive missile batteries.

### ***Bombing Range – MIL-49***

Large area of land or sea used for training, and testing of air-to-ground weaponry.

### ***Ordnance Depot – MIL-50***

Areas characterised as having been used for munitions storage.

### ***Military Airfield – MIL-51***

Active or Inactive facility for the operation of military aircraft. Characterised by the presence of runways, hangars and air traffic control buildings.

### ***Barracks – MIL-103***

Military complexes for the accommodation and training of personnel.

### ***Military Other – MIL-109***

Encompasses all other military sites not included above, such as radar and communications sites.

## **9. Orchards and Allotments - ORC**

### ***Nurseries – ORC-52***

Land used for growing plants or trees for later planting sale. Identifiable from map data or by the large areas of greenhousing seen on site.

### ***Allotment Gardens – ORC-53***

Publicly owned land that has been divided into small plots for rental by individuals. Identifiable from APs and map data. Not to be confused with Land Association Allotments and smallholdings.

### ***Orchards – ORC-54***

Areas of land given over to the commercial growing of fruit. These can often be seen on 1<sup>st</sup> edition OS maps, but large modern examples are more common.

## **10. Parkland - PRK**

### ***Landscape Park – PRK-55***

Parkland that has been landscaped by the planting of trees, digging/raising of earthwork features and lakes, for the purpose of providing an aesthetically pleasing setting for a country house.

### ***Formal Gardens – PRK-56***

Designed ornamental gardens, usually found in the immediate vicinity of a country house or stately home.

### ***Kitchen Gardens – PRK-57***

Often surrounded by a brick wall, these features are also found associated with country houses. They are clearly indicated by a regular pattern of cultivation.

### ***Deer Park – PRK-58***

Identifies those areas known to have been medieval deer parks and have been identified on the HER or where the boundaries can still be distinguished on the modern or 1st ed OS map base.

### ***Estate Buildings – PRK-59***

Farm buildings and cottages associated with an estate. Residential buildings are often constructed to a common design in a planned fashion

### ***Country House – PRK-60***

Large stately homes, often surrounded by extensive estates or landscape parks. Although intended as residential features, these are now often preserved as museums by national organisations. This HLC type is included here as it is inappropriate to divorce these objects from their surroundings.

## **11. Recreational Open Space - ROS**

### ***Recreation Ground – ROS-61***

Areas of land accessible to the public commonly in an urban context and has undergone a degree of landscaping, can include wider roadside verges.

### ***Golf Course – ROS-62***

Golf courses identified as such from the current OS map base.

### ***Nature Reserve – ROS-64***

Area of land given over to the conservation of wildlife or habitats. Often results from a previous land use that renders the area useless for other purposes, such as quarrying or peat extraction.

### ***Recreational Seafront – ROS-97***

Coastal resort amenities such as amusement arcades and fairground rides.



## **12. Settlement – SET**

### ***Caravan Park – SET-65***

Generally for recreational use. However, some are used year round as low-cost housing in the vicinity of urban centres.

### ***Isolated Farmstead – SET-66***

Residential farm buildings standing alone in open countryside. These will typically date from after Enclosure, as farmers moved away from villages and closer to their new holdings.

### ***Terraced Housing (C20th) – SET-67***

Terraced housing appearing on 2<sup>nd</sup> edition or modern OS mapping.

### ***Detached Housing (C20<sup>th</sup> /21<sup>st</sup>) – SET-68***

Areas of detached housing visible on 2<sup>nd</sup> edition or modern OS mapping.

### ***Terraced Housing (C18th) – SET-69***

Terraced housing appearing on 1st edition OS mapping and identified from street level photography.

### ***Detached Housing (C18th) – SET-70***

Detached housing appearing on 1st edition OS mapping and identified from street level photography.

### ***Flats and Apartments – SET-71***

Multi storey residential buildings.

### ***Planned Residential Development – SET-72***

Settlement areas that have been designed and built in a planned fashion, such as post-WWII council estates and modern private housing estates.

### ***Historic Settlement Core – SET-73***

Historic settlement cores suggested by morphology, data held in the HER, or earthwork remains. These are often more extensive than current survival would indicate, and use of the previous type function will allow this to be shown.

### ***Terraced Housing (C19th) – SET-74***

Terraced housing visible on 1<sup>st</sup> edition (1888) OS mapping.

### ***Pre 1960s Semi Detached Housing – SET-75***

Semi detached housing built before 1960.

### ***Detached Housing (C19th) – SET-76***

Areas of detached housing visible on 1<sup>st</sup> edition OS mapping.

### ***Medieval High Status Residence – SET-77***

Previous HLC type used to indicate the presence of a medieval centre of government. These can be indicated by place name evidence, morphological features, or may be found in the HER.

***Religious Foundation – SET-78***

Religious foundations, such as monasteries. These are often indicated on OS mapping, and are usually kept as records by the HER.

***Village Farmstead – SET-79***

Residential farm buildings within or immediately adjacent to an historic settlement core. Such buildings will probably date from before the enclosure of open fields and commons.

***Holiday Camps – SET-98***

Self-contained holiday accommodation and entertainment facilities.

***Post 1960s Semi-Detached Housing – SET-102***

Semi detached housing built after 1960.

### **13. Unenclosed Land - UNE**

#### ***Water Meadow – UNE-80***

Area of wetland grazing adjacent to a river or stream. Indicated by place name evidence, such as 'Ings' or 'Meadows'.

#### ***Turbary – UNE-81***

Area of land where a legal right exists for the cutting of turf and peat for fuel and building material, and where this right has been exercised, resulting in a depressed area of wetland.

#### ***Heathland – UNE-82***

These areas are usually identified from map data and place-name evidence, along with the English Nature lowland and upland heath datasets.

#### ***Fenland – UNE-83***

Open grazing land that was waterlogged in winter due to seasonal rainfall and river flooding.

#### ***Marshland – UNE-84***

Open grazing land that was subject to tidal inundation by salt water.

#### ***Rabbit Warren – UNE-85***

Land given over to the raising of rabbits.

## **14. Water and Wetlands - WAW**

### ***Raised Mire – WAW-86***

Areas of unimproved peats, formation of which will typically have begun in the prehistoric period.

### ***Marsh – WAW-87***

Areas marked as marsh on the modern OS map base.

### ***Ornamental Open Water – WAW-88***

Bodies of water created or modified for the purpose of landscaping or recreational use.

### ***Artificial Open Water – WAW-89***

This type includes reservoirs, irrigation ponds, settling pools and quarry pits.

### ***Natural Open Water – WAW-90***

Expanses of open water over 1ha which have natural origins. Typically these will occupy basins formed during the last glaciation.

## **15. Woodland - WDL**

### ***Estate Woodland – WDL-91***

Ornamental woodland planted as part of landscaping projects, usually in the 18<sup>th</sup> and 19<sup>th</sup> centuries. Such woodlands often define the boundaries of a major country estate, and where they have been cleared, can often be recognised from 1<sup>st</sup> edition OS maps.

### ***Ancient/Semi Natural Woodland – WDL-92***

Woods classified by English Nature as 'Ancient Semi-Natural'. This type is derived from the Ancient Woodland Inventory dataset supplied by English Nature.

### ***Plantation Woodland – WDL-93***

Woods identified as plantations from morphology or name. This type includes those that have been cleared, and these will be represented as a previous type.

### ***Other Woodland – WDL-94***

Areas of woodland that do not fit into the above categories, such as natural growth over derelict land.

### ***Fox Coverts – WDL-95***

Areas of plantation woodland specifically planted to provide cover for foxes and other game animals. These often form part of a wider hunting landscape.

---

## ANNEX B: HISTORIC ORDNANCE SURVEY MAPPING

FieldID	HLC Character Zone	HLC Broad Type	HLC Type	Field Number (Appendix)	Cropmarks identified through aerial photographs	Earthworks identified through LiDAR
086	The Fosse Way	FIE - Fields and Enclosed Land	FIE 29 - Visible time depth	64	Med/PM R&F	Med plough headland
089	The Fosse Way	FIE - Fields and Enclosed Land	FIE 29	65	Med/PM R&F	
141	The Valley Fens	FIE - Fields and Enclosed Land	FIE 27	159	Modern Anti-landing ditches	anti land trenches and former course of river
090	The Fosse Way	FIE - Fields and Enclosed Land	FIE 32	62	no evidence	no evidence
088	The Fosse Way	FIE - Fields and Enclosed Land	FIE 29	61 and 147	Med/PM R&F	
091	The Fosse Way	FIE - Fields and Enclosed Land	FIE 27	63 and 146	Med/PM R&F, baulk, field boundary, and short bank (possible PM defences)	earthworks in floodplain survive - bank, headlands, and end of ridges
136	The Valley Fens	FIE - Fields and Enclosed Land	FIE 27	156	Med/PM R&F and PM field boundaries	
124	The Valley Fens	FIE - Fields and Enclosed Land	FIE 30	152	no evidence	no evidence
123	The Valley Fens	FIE - Fields and Enclosed Land	FIE 30	152	no evidence	no evidence
127	The Valley Fens	FIE - Fields and Enclosed Land	FIE 30	152	no evidence	no evidence
126	The Valley Fens	FIE - Fields and Enclosed Land	FIE 30	152	no evidence	no evidence
125	The Valley Fens	FIE - Fields and Enclosed Land	FIE 30	152	no evidence	no evidence
137	The Valley Fens	FIE - Fields and Enclosed Land	FIE 27	155	Med/PM R&F	
142	The Valley Fens	FIE - Fields and Enclosed Land	FIE 27	158	anti-land trenches from WW2	Former course of the river
143	The Valley Fens	FIE - Fields and Enclosed Land	FIE 27	158	anti-land trenches from WW2	Former course of the river
135	The Valley Fens	FIE - Fields and Enclosed Land	FIE 27	47	Med/PM R&F	
134	The Valley Fens	FIE - Fields and Enclosed Land	FIE 27	47	Med/PM R&F	
130	The Valley Fens	FIE - Fields and Enclosed Land	FIE 27	153	Med/PM R&F	
139	The Valley Fens	FIE - Fields and Enclosed Land	FIE 27	157	Possible Med plough head, R&F, and WW2 anti landing ditches	
122	The Valley Fens	FIE - Fields and Enclosed Land	FIE 27	46	possible rectilinear enclosure, Med/PM R&F, cropmarks of uncertain origin	
128	The Valley Fens	FIE - Fields and Enclosed Land	FIE 27	152	Med/PM R&F and plough headland	
094	The Fosse Way	FIE - Fields and Enclosed Land	FIE 27	146	Med/PM R&F, baulk, field boundary, and short bank (possible PM defences)	earthworks in floodplain survive - bank, headlands, and end of ridges
081	The Fosse Way	FIE - Fields and Enclosed Land	FIE 27	59	Med/PM R&F	
080	The Fosse Way	FIE - Fields and Enclosed Land	FIE 27	58	Med/PM R&F	
138	The Valley Fens	FIE - Fields and Enclosed Land	FIE 32	155	Med/PM R&F	
093	The Fosse Way	FIE - Fields and Enclosed Land	FIE 27 - Visible time depth	60	Med/PM R&F, baulk, field boundary	Med/PM field boundary, baulk
133	The Valley Fens	FIE - Fields and Enclosed Land	FIE 32	154	Med/PM R&F	
129	The Valley Fens	FIE - Fields and Enclosed Land	FIE 27	151	Med/PM R&F	
121	The Valley Fens	FIE - Fields and Enclosed Land	FIE 27	149	Med/PM R&F and unknown cropmarks extending into parcel 46	
096	The Fosse Way	FIE - Fields and Enclosed Land	FIE 32 - Visible time depth	56	Med/PM R&F	Med plough headland
079	The Fosse Way	FIE - Fields and Enclosed Land	FIE 27	53	Med/PM R&F	two short ditches reflecting PM field boundaries
097	The Fosse Way	FIE - Fields and Enclosed Land	FIE 32 - Visible time depth	55	Med/PM R&F	Med plough headland
078	The Fosse Way	FIE - Fields and Enclosed Land	FIE 27	54	Med/PM R&F and a pond	
076	The Fosse Way	FIE - Fields and Enclosed Land	FIE 32	no number	no evidence	no evidence
098	The Fosse Way	FIE - Fields and Enclosed Land	FIE 32 - Visible time depth	52	Med/PM R&F	Med plough headland
132	The Valley Fens	FIE - Fields and Enclosed Land	FIE 27	not included	no evidence	no evidence
101	The Fosse Way	FIE - Fields and Enclosed Land	FIE 27	57 and 80	Med/PM R&F and a pond	pond
077	The Fosse Way	FIE - Fields and Enclosed Land	FIE 27	51	Med/PM R&F	
119	The Valley Fens	FIE - Fields and Enclosed Land	FIE 27	148	Med/PM R&F and two possible ditches of unknown origin	
100	The Fosse Way	FIE - Fields and Enclosed Land	FIE 32 - Visible time depth	50	Med/PM R&F	Med plough headland
099	The Fosse Way	FIE - Fields and Enclosed Land	FIE 27	49	Med/PM R&F	
073	The Fosse Way	FIE - Fields and Enclosed Land	FIE 27	144	Med/PM R&F	
075	The Fosse Way	FIE - Fields and Enclosed Land	FIE 29	48	Med/PM R&F and a baulk	
074	The Fosse Way	FIE - Fields and Enclosed Land	FIE 27	143	no evidence	no evidence
131	The Valley Fens	FIE - Fields and Enclosed Land	FIE 27	not included	no evidence	no evidence
102	The Fosse Way	FIE - Fields and Enclosed Land	FIE 27	141	no evidence	no evidence
118	The Valley Fens	FIE - Fields and Enclosed Land	FIE 32	45	Med/PM ditches, Med/PM R&F	
113	The Fosse Way	FIE - Fields and Enclosed Land	FIE 27	42	Med/PM R&F	

[illegible]



Remains recorded on the HER	HERno	Satellite image
		divided into 3 large fields no change no change no change one large field with 83 and 82
		no change no change no change no change no change no change no change subdivision subdivision subdivision no change no change no change
		no change
		no change no change
		no change no change no change no change
		boundary loss no change no change
		no change
Med field system	MLI85883	no change no change
Med field system	MLI85883	no change no change no change
Med field system	MLI85883	no change no change
Med field system	MLI85883	boundary loss quarry activity in field
		subdivision
		no change boundary loss no change no change no change no change no change no change

117	The Valley Fens	FIE - Fields and Enclosed Land	FIE 32	44	no evidence	no evidence
115	The Valley Fens	FIE - Fields and Enclosed Land	FIE 32	43	Three hollows, likely PM features	
			FIE 32 - Visible time			
104	The Fosse Way	FIE - Fields and Enclosed Land	depth	139	Med/PM R&F and plough headland	plough headland survives as earthwork
			FIE 32 - Visible time			
103	The Fosse Way	FIE - Fields and Enclosed Land	depth	139	Med/PM R&F and plough headland	plough headland survives as earthwork
106	The Fosse Way	HEW - Historic Earthworks	HEW 34	135	Possible Med settlement, R&F, field boundaries	
108	The Fosse Way	HEW - Historic Earthworks	HEW 34	136	Broad ditch associated with med settlement remains to south, Med R&F, PM field boundaries, pond	only broad ditch associated with settlement to south survives as earthwork
070	The Fosse Way	FIE - Fields and Enclosed Land	FIE 27	133	Med/PM R&F	
					Possible Med settlement (or PM drainage), plough headland, R&F	Possible Med settlement (or PM drainage), plough headland, R&F
105	The Fosse Way	HEW - Historic Earthworks	HEW 34	134		
107	The Fosse Way	FIE - Fields and Enclosed Land	FIE 32	unclear	no evidence	no evidence
114	The Valley Fens	FIE - Fields and Enclosed Land	FIE 29	41	Med/PM R&F	
112	The Fosse Way	FIE - Fields and Enclosed Land	FIE 29	40	Med/PM R&F	
069	The Fosse Way	FIE - Fields and Enclosed Land	FIE 32	132	Med/PM R&F and plough headland	
			FIE 32 - Visible time			
067	The Fosse Way	FIE - Fields and Enclosed Land	depth	37	Med/PM R&F and plough headland	Med/ PM plough headland
111	The Fosse Way	FIE - Fields and Enclosed Land	FIE 29	39	Med/PM R&F	
065	The Fosse Way	FIE - Fields and Enclosed Land	FIE 32	130	stream channels	possible PM bank and ditch
063	The Fosse Way	FIE - Fields and Enclosed Land	FIE 27	128	Med/PM R&F	
066	The Fosse Way	FIE - Fields and Enclosed Land	FIE 32	38	Med/PM R&F	
			FIE 27 - Visible time			
062	The Fosse Way	FIE - Fields and Enclosed Land	depth	36	Med/PM R&F and plough headland	Med/ PM plough headland
			FIE 32 - Visible time			
064	The Fosse Way	FIE - Fields and Enclosed Land	depth	129	Med/PM R&F, plough headland and baulks, PM drainage ditches. Short section of paleochannel	Med/PM R&F, plough headland and baulks, PM drainage ditches. Short section of paleochannel
061	The Fosse Way	FIE - Fields and Enclosed Land	FIE 27	35 and 126	Med/PM R&F	Med/PM R&F (a small amount survive in parcel 126)
059	The Fosse Way	FIE - Fields and Enclosed Land	FIE 32	127	small unknown curved ditch	
060	The Fosse Way	FIE - Fields and Enclosed Land	FIE 32	34	Med/PM R&F	
058	The Fosse Way	FIE - Fields and Enclosed Land	FIE 32	124	Med/PM R&F and an unknown ditch	
					Med/PM plough headland and R&F, ditch cropmark potentially representing a Roman Road	
057	The Fosse Way	FIE - Fields and Enclosed Land	FIE 27	125		
047	The Fosse Way	FIE - Fields and Enclosed Land	FIE 27	105	Med/PM R&F	
050	The Fosse Way	FIE - Fields and Enclosed Land	FIE 32	33	Med/PM R&F	
048	The Fosse Way	FIE - Fields and Enclosed Land	FIE 27	104	no evidence	no evidence
046	The Fosse Way	FIE - Fields and Enclosed Land	FIE 27	105	Med/PM R&F	
049	The Fosse Way	FIE - Fields and Enclosed Land	FIE 32	32	Med/PM R&F and an unknown ditch	
051	The Fosse Way	FIE - Fields and Enclosed Land	FIE 27	31	Med/PM R&F and a pond	
040	The Fosse Way	FIE - Fields and Enclosed Land	FIE 28	102	Med/PM R&F	
052	The Fosse Way	FIE - Fields and Enclosed Land	FIE 32	30	no evidence	no evidence
041	The Fosse Way	FIE - Fields and Enclosed Land	FIE 28	12	no evidence	no evidence
054	The Fosse Way	FIE - Fields and Enclosed Land	FIE 32	116	Med/PM R&F	
055	The Fosse Way	FIE - Fields and Enclosed Land	FIE 32	118	no evidence	no evidence
053	The Fosse Way	FIE - Fields and Enclosed Land	FIE 32	117	Med/PM R&F	
056	The Fosse Way	FIE - Fields and Enclosed Land	FIE 27	29	Med/PM R&F	
			FIE 29 - Visible time			
043	The Fosse Way	FIE - Fields and Enclosed Land	depth	104	Med/PM plough headlands and field boundaries, R&F,	Med/PM plough headlands and field boundaries, R&F
023	The Fosse Way	FIE - Fields and Enclosed Land	FIE 29	111	Med/PM R&F	
			FIE 28 - Visible time			
038	The Fosse Way	FIE - Fields and Enclosed Land	depth	101	Med/PM R&F and ploughland, and water channel continuing from Field 9	Med/PM R&F and ploughland, and water channel continuing from Field 9
			FIE 28 - Visible time			
039	The Fosse Way	FIE - Fields and Enclosed Land	depth	9	possible Med/PM settlement remains and water channel	possible Med/PM settlement remains and water channel

agricultural field	agricultural field	no change	no change	no change	no change
agricultural field	agricultural field	no change	no change	no change	no change
1 regular field	no change	no change	no change	no change	no change
3 regular fields	some boundary loss	no change	no change	field amalgamation. some boundary loss	no change
2 fields and part of a small building, possible early farmhouse	one large field, no building	no change	no change	no change	no change
2 fields and part of a small building, possible early farmhouse	one large field, no building	no change	no change	field amalgamation, some boundary loss	no change
part of 3 regular fields	no change	no change	no change	no change	no change
1 irregular shaped field	no change	no change	no change	no change	no change
2 fields	field amalgamation, boundary loss	no change	no change	no change	no change
agricultural field	agricultural field some small boundary loss. A small building and a gravel pit are recorded in this map	no change	some internal field boundary loss	internal field boundary loss, now one large field	no change
8 fields	no change	no change	no change	one large field, massive boundary loss	no change
part of 1 field	no change	no change	no change	no change	no change
1 field	no change	no change	no change	track shown in the centre of the field	no change
8 fields	small boundary loss	no change	some field boundary loss in NE corner	one large field, massive boundary loss	no change
not available	1 irregular shaped field	no change	no change	no change	no change
not available	2 small fields	no change	no change	no change	no change
not available	1 regular field	no change	no change	no change	no change
2 regular fields	no change	no change	no change	no change	no change
not available	1 irregular field	no change	no change	no change	no change
2 regular fields	no change	no change	no change	field amalgamation. some boundary loss	no change
not available	3 fields	no change	no change	field amalgamation. some boundary loss	no change
not available	2 fields	no change	no change	no change	no change
not available	1 regular field	no change	no change	no change	no change
3 regular fields	no change	no change	no change	field amalgamation, some boundary loss	no change
not available	4 regular fields, a small building and well are recorded	no change	no change	field amalgamation, some boundary loss	no change
not available	1 irregular field	no change	no change	no change	no change
not available	2 regular fields	no change	no change	field amalgamation, some boundary loss	no change
not available	2 regular fields	no change	no change	field amalgamation, some boundary loss	no change
not available	1 irregular field	no change	no change	no change	no change
not available	2 small fields	no change	no change	field amalgamation, some boundary loss	no change
not available	irregular field	no change	no change	no change	no change
not available	1 long linear field	no change	no change	no change	no change
not available	irregular field	no change	no change	no change	no change
not available	1 small field	no change	no change	no change	no change
not available	1 small field	no change	no change	no change	no change
not available	1 small field	no change	no change	no change	no change
not available	3 regular fields	no change	no change	no change	no change
not available	9 regular fields	no change	no change	field amalgamation, some boundary loss	no change
not available	3 linear fields	no change	no change	field amalgamation, some boundary loss	no change
not available	2 regular fields	no change	no change	no change	no change
not available	irregular field	no change	no change	no change	no change

no change  
no change

no change

no change

Part of Thurlby Med settlement	MLI85878
--------------------------------	----------

Part of Thurlby Med settlement	MLI85878
--------------------------------	----------

R&amp;F MLI85884

polygon for Aubourn med settlement  
 partially extends into this field

no change  
no change

no change

polygon for Aubourn med settlement	
partially extends into this field	
possible watermill	MLI82078, MLI82089
Med fishery located in north of field	MLI82090

boundary loss

R&F MLI83438

no change

[illegible]

undated bank and ditch MLI86284

possible remains associated with  
Morton Med activity and with Morton  
Grange MLI83041, MLI83164

no change

037	The Fosse Way	FIE - Fields and Enclosed Land	FIE 28	7	no evidence	no evidence
045	The Fosse Way	FIE - Fields and Enclosed Land	FIE 29	107	Med/PM R&F and plough headland	
022	The Fosse Way	FIE - Fields and Enclosed Land	FIE 27	28	Med/PM R&F	bank which represent PM field boundary on OS map
036	The Fosse Way	FIE - Fields and Enclosed Land	FIE 28	8	no evidence	no evidence
012	The Fosse Way	FIE - Fields and Enclosed Land	FIE 28	110	Med/PM R&F	
013	The Fosse Way	FIE - Fields and Enclosed Land	FIE 28	No number	no evidence	no evidence
034	The Fosse Way	FIE - Fields and Enclosed Land	FIE 28	4	no evidence	no evidence
			FIE 27 - Visible time		Med/PM R&F, field boundaries, or lynchets. Pond and	Med/PM R&F, field boundaries, or lynchets (most have been
026	The Fosse Way	FIE - Fields and Enclosed Land	depth	11	ditches	levelled)
035	The Fosse Way	FIE - Fields and Enclosed Land	FIE 28	5		probable PM field boundary
			FIE 27 - Visible time		cropmarks of rectangular and circular pits and short	
027	The Fosse Way	FIE - Fields and Enclosed Land	depth	10	ditches. Origin unknown	Med/PM field boundaries
025	The Fosse Way	FIE - Fields and Enclosed Land	FIE 29	106	Med/PM R&F	
028	The Fosse Way	FIE - Fields and Enclosed Land	FIE 28	6	no evidence	no evidence
021	The Fosse Way	FIE - Fields and Enclosed Land	FIE 29	21 and 22	Med/PM R&F	
033	The Fosse Way	FIE - Fields and Enclosed Land	FIE 28	100	no evidence	no evidence
032	The Fosse Way	FIE - Fields and Enclosed Land	FIE 28	2	L-shaped ditch of unknown date	
030	The Fosse Way	FIE - Fields and Enclosed Land	FIE 28	2	Med/PM R&F	
010	The Fosse Way	FIE - Fields and Enclosed Land	FIE 27	108	Med/PM R&F	
011	The Fosse Way	FIE - Fields and Enclosed Land	FIE 29	20 and 112	Med/PM R&F	
020	The Fosse Way	FIE - Fields and Enclosed Land	FIE 27	23	Med/PM R&F	
029	The Fosse Way	FIE - Fields and Enclosed Land	FIE 27	3	Med/PM R&F	
031	The Fosse Way	FIE - Fields and Enclosed Land	FIE 28	1	no evidence	no evidence
007	The Fosse Way	FIE - Fields and Enclosed Land	FIE 27	19	Med/PM R&F	earthwork banks representing PM field system on OS map
019	The Fosse Way	FIE - Fields and Enclosed Land	FIE 27	24	Med/PM R&F	
008	The Fosse Way	FIE - Fields and Enclosed Land	FIE 29	109	Med/PM R&F	
			FIE 27 - Visible time			
016	The Fosse Way	FIE - Fields and Enclosed Land	depth	113	Med/PM plough headland, R&F, pond	Med/PM plough headland
015	The Fosse Way	FIE - Fields and Enclosed Land	FIE 28	26	Med/PM R&F	
			FIE 27 - Visible time			
006	The Fosse Way	FIE - Fields and Enclosed Land	depth	18	Med/PM R&F and possible pond	bank possibly representing med ploughland
014	The Fosse Way	FIE - Fields and Enclosed Land	FIE 28	25	Med/PM R&F	
018	The Fosse Way	FIE - Fields and Enclosed Land	FIE 27	27	Med/PM R&F	
017	The Fosse Way	FIE - Fields and Enclosed Land	FIE 27	114 and 115	Med/PM R&F	modern quarry put
002	The Fosse Way	FIE - Fields and Enclosed Land	FIE 27	14	Med/PM R&F	earthwork banks representing PM field system on OS map
001	The Fosse Way	FIE - Fields and Enclosed Land	FIE 27	13	no evidence	no evidence
003	The Fosse Way	FIE - Fields and Enclosed Land	FIE 28	15	Med/PM R&F	
004	The Fosse Way	FIE - Fields and Enclosed Land	FIE 28	16		possible medieval plough headland
005	The Fosse Way	FIE - Fields and Enclosed Land	FIE 27	17	Med/PM R&F	
068	The Fosse Way	FIE - Fields and Enclosed Land	FIE 32	131	Med/PM R&F	
071	The Fosse Way	FIE - Fields and Enclosed Land	FIE 32	138	no evidence	no evidence
			FIE 32 - Visible time			
072	The Fosse Way	FIE - Fields and Enclosed Land	depth	140	Med plough headland and Med/PM R&F	plough headland survives and low earthwork
			FIE 32 - Visible time		Possible medieval headland cut by Med/PM R&F and	
140	The Valley Fens	FIE - Fields and Enclosed Land	depth	159	Modern Anti-landing ditches	Possible medieval headland cut by Med/PM R&F
			FIE 29 - Visible time			
085	The Fosse Way	FIE - Fields and Enclosed Land	depth	64	Med/PM R&F	Med plough headland
084	The Fosse Way	FIE - Fields and Enclosed Land	FIE 29	147	Med/PM R&F	
			FIE 29 - Visible time			
087	The Fosse Way	FIE - Fields and Enclosed Land	depth	64	Med/PM R&F	Med plough headland

not available	regular field	no change	no change	no change	no change
not available	5 regular fields	no change	no change	field amalgamation, some boundary loss	no change
not available	part of 9 small fields	no change	no change	field amalgamation, some boundary loss	no change
not available	small regular field	no change	no change	no change	no change
not available	irregular field	no change	no change	footpath no longer shown	no change
not available	regular field and outbuildings associated with farm	no change	no change	no change	no change
not available	small regular field	no change	no change	no change	no change
not available	5 regular fields	no change	no change	field amalgamation, some boundary loss	no change
not available	small regular field	no change	no change	no change	no change
not available	2 regular fields	no change	no change	field amalgamation, some boundary loss	no change
not available	4 irregular fields	no change	no change	field amalgamation, some boundary loss	no change
not available	large irregular field	no change	no change	no change	no change
not available	5 fields	no change	no change	field amalgamation, some boundary loss	no change
not available	small irregular field	no change	no change	no change	no change
not available	small regular field	no change	no change	no change	no change
not available	small irregular field	no change	no change	no change	no change
not available	part of 2 regular fields	no change	no change	field amalgamation, some boundary loss	no change
not available	3 irregular fields	no change	no change	field amalgamation, some boundary loss	no change
not available	part of 3 regular fields	no change	no change	field amalgamation, some boundary loss	no change
not available	3 small irregular fields	no change	no change	field amalgamation, some boundary loss	no change
not available	2 small regular fields	no change	no change	field amalgamation, some boundary loss	no change
not available	part of 4 regular fields	no change	no change	field amalgamation, some boundary loss	no change
not available	part of 2 regular fields	no change	no change	field amalgamation, some boundary loss	no change
not available	part of 4 regular fields	no change	no change	field amalgamation, some boundary loss	no change
not available	part of 5 regular fields	no change	no change	field amalgamation, some boundary loss	no change
not available	1 regular field	no change	no change	not shown on mapping (white space)	not shown on mapping (white space)
not available	part of 3 fields	no change	no change	field amalgamation, some boundary loss	no change
not available	2 irregular fields	no change	no change	not shown on mapping (white space)	not shown on mapping (white space)
not available	3 regular fields	no change	no change	no change	no change
not available	part of 3 fields with buildings	no change	majority of the buildings are no longer extant	not shown on mapping (white space)	not shown on mapping (white space)
not available	part of 5 fields	no change	no change	field amalgamation, some boundary loss	no change
not available	2 regular fields	no change	no change	no change	no change
not available	1 regular field	no change	no change	no change	no change
not available	2 regular fields	no change	no change	field amalgamation, some boundary loss	no change
not available	4 regular fields	no change	no change	field amalgamation, some boundary loss	no change
part of 2 fields	no change	no change	no change	no change	no change
1 regular field	no change	no change	no change	no change	no change
no tithe available	agricultural field	no change	no change	small area of Orchard shown on W side	no change
10 small fields	amalgamation, some boundary loss	no change	some field amalgamation and boundary loss	further amalgamation and boundary loss	no change
part of one larger fields	some sub division	no change	some field amalgamation and boundary loss	further amalgamation and boundary loss	no change
4 agricultural fields	some small boundary loss	no change	some field amalgamation and boundary loss	further amalgamation and boundary loss	no change

possible remains associated with Morton Med activity	MLI83041	no change field amalgamation, some boundary loss
R&F	MLI83440	field amalgamation, boundary loss no change no change  no change no change field amalgamation, some boundary loss no change  no change field amalgamation, some boundary loss loss no change no change no change no change no change field amalgamation, some boundary loss loss no change no change no change no change no change  no change no change field amalgamation, some boundary loss loss no change no change field amalgamation, some boundary loss loss boundary loss no change  no change  no change  divided into 3 large fields  no change  divided into 3 large fields
R&F	MLI83040	not shown on mapping (white space) field amalgamation, some boundary loss field amalgamation, some boundary loss no change no change field amalgamation, some boundary loss boundary loss no change  no change  no change  divided into 3 large fields  no change  divided into 3 large fields

082	The Fosse Way	FIE - Fields and Enclosed Land	FIE 29	61	Med plough headland, Med/PM R&F	PM field boundaries
083	The Fosse Way	FIE - Fields and Enclosed Land	FIE 29	61	Med plough headland, Med/PM R&F	PM field boundaries
092	The Fosse Way	FIE - Fields and Enclosed Land	FIE 27 - Visible time depth	146	Med/PM R&F, baulk, field boundary, and short bank (possible PM defences)	earthworks in floodplain survive - bank, headlands, and end of ridges
095	The Fosse Way	FIE - Fields and Enclosed Land	FIE 27 - Visible time depth	146	Med/PM R&F, baulk, field boundary, and short bank (possible PM defences)	earthworks in floodplain survive - bank, headlands, and end of ridges
009	The Fosse Way	FIE - Fields and Enclosed Land	FIE 28	108	Med/PM R&F and plough headland	
024	The Fosse Way	FIE - Fields and Enclosed Land	FIE 28	107	Med/PM R&F	
042	The Fosse Way	FIE - Fields and Enclosed Land	FIE 28 - Visible time depth	104	Med/PM R&F	Med/PM R&F
044	The Fosse Way	FIE - Fields and Enclosed Land	FIE 29 - Visible time depth	104	Med/PM plough headlands and field boundaries, R&F, and possible quarry	Med/PM plough headlands and field boundaries, R&F, and possible quarry
109	The Fosse Way	FIE - Fields and Enclosed Land	FIE 27	136	Broad ditch associated with med settlement remains to south, Med R&F, PM field boundaries, pond	
116	The Valley Fens	FIE - Fields and Enclosed Land	FIE 32	43	no evidence	no evidence
120	The Valley Fens	FIE - Fields and Enclosed Land	FIE 27	150	Med/PM R&F	
110	The Fosse Way	FIE - Fields and Enclosed Land	FIE 32	not included	no evidence	no evidence



13 small fields	some subdivision	no change	no change	field amalgamation. some boundary loss	no change
5 fields	some sub division	no change	some field amalgamation and boundary loss	further amalgamation and boundary loss	no change
3 small fields	some sub division	no change	field amalgamated, field boundary loss	further amalgamation and boundary loss	no change
part of 2 fields not available	no change irregular field	no change no change	no change no change	field amalgamation. some boundary loss no change	no change no change
not available	regular field	no change	no change	field amalgamation, some boundary loss	no change
not available	irregular field	no change	no change	field amalgamation, some boundary loss	no change
not available	part of 5 regular fields	no change	no change	field amalgamation, some boundary loss	no change
1 irregular shaped field	no change	no change	no change	field amalgamation, some boundary loss	no change
agricultural field	agricultural field	no change	no change	no change	no change
no tithe available	agricultural field	no change	no change	amalgamated with 119	no change
1 irregular shaped field	no change	no change	no change	no change	no change

		one large field with 88 and 83
		one large field with 88 and 82
		no change
		no change
		no change
		field amalgamation, some boundary loss
		subdivision of former large field
undated bank and ditch	MLI86284	subdivision of former large field
		subdivision
		no change
		subdivision
		subdivision

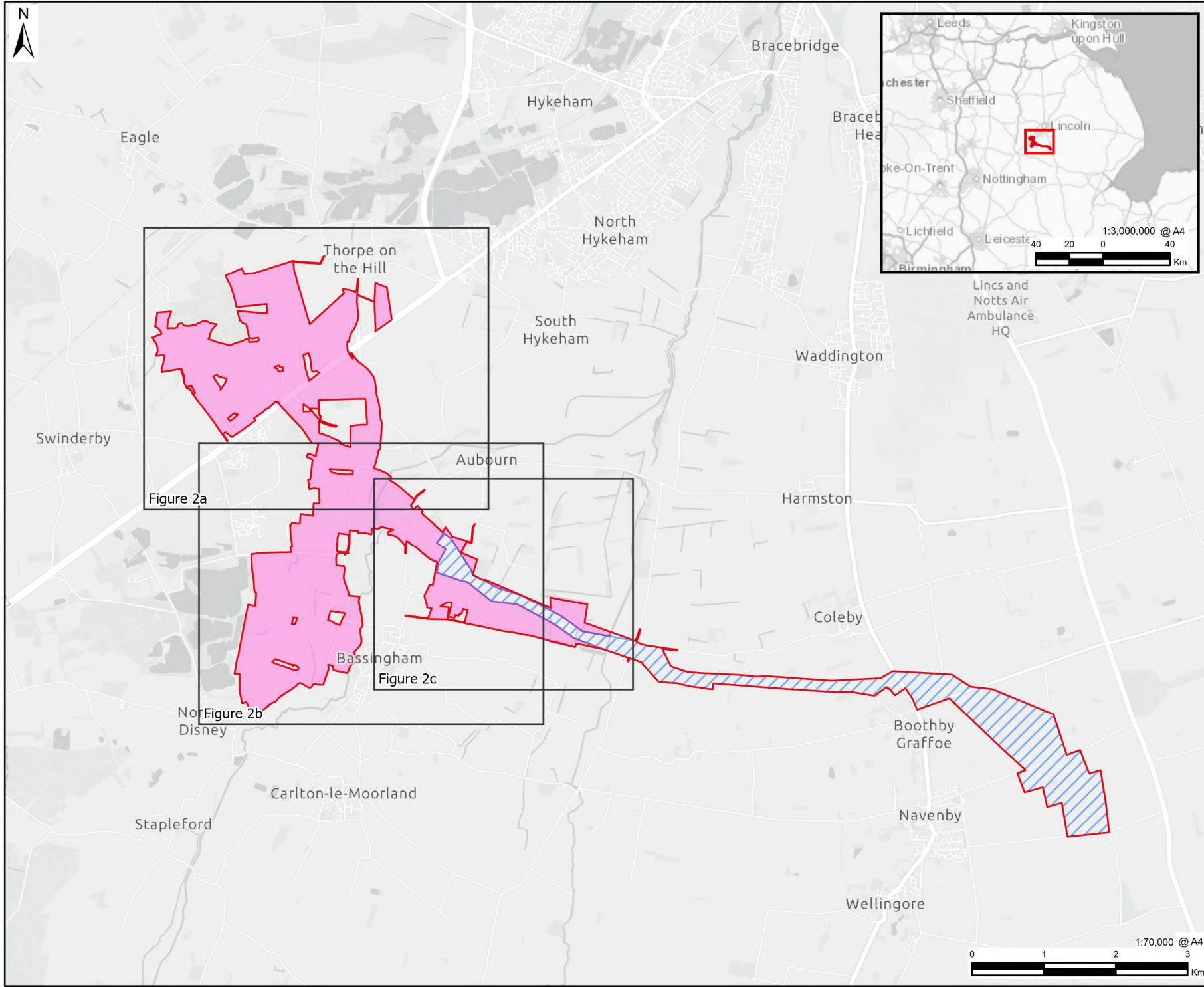
---

## ANNEX C: FIGURES

**Figure 7-E-1: Site Location Plan**

**Figure 7-E-2: HLC Character Areas within the Principal Site**

**Figure 7-E-3: Important Hedgerows**



**PROJECT**  
Fosse Green Energy

**CLIENT**  
Fosse Green Energy Ltd

**CONSULTANT**  
AECOM Limited  
Sunley House  
4 Bedford Park  
Surrey, CR0 2AP, UK  
www.aecom.com

**LEGEND**  
 DCO Site  
 Principal Site  
 Cable Corridor

**NOTES**  
Reproduced from Ordnance Survey digital map data © Crown copyright (2025). All rights reserved. Ordnance Survey Licence AC000808122.

**LEGISLATION**  
Regulation 5(2)(a) Infrastructure Planning (Applications: Prescribed Forms and Procedure) Regulations 2009.

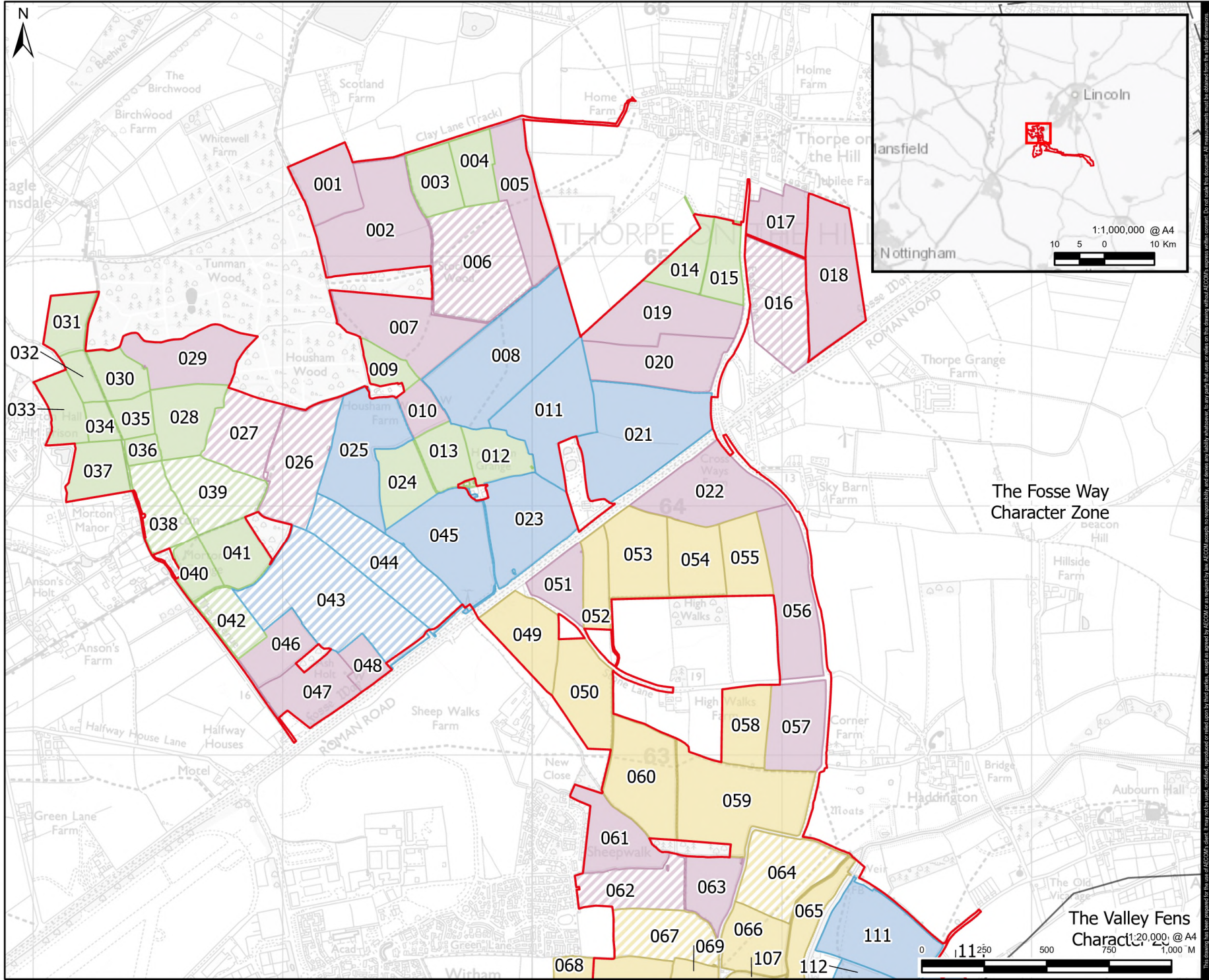
**ISSUE PURPOSE**  
DCO Submission

**FIGURE TITLE**  
Proposed Development Location showing Principal Site and Grid Connection Corridor

FIGURE NUMBER	REV.
Figure 7-E-1	01

**DOCUMENT REFERENCE**  
EN10154/APP/6.3





**PROJECT**  
Fosse Green Energy

**CLIENT**  
Fosse Green Energy Ltd

**CONSULTANT**  
AECOM Limited  
Sunley House  
4 Bedford Park  
Surrey, CR0 2AP, UK  
www.aecom.com

- LEGEND**
- DCO Site
  - Re-organised Piecemeal Enclosure (FIE 27)
  - Re-organised Piecemeal Enclosure (FIE 27) with surviving time depth
  - Parliamentary Planned Enclosure (FIE 28)
  - Parliamentary Planned Enclosure (FIE 28) with surviving time depth
  - Modern Fields (FIE 29)
  - Modern Fields (FIE 29) with surviving time depth
  - Paddocks and Closes (FIE 30)
  - Private Planned Enclosure (FIE 32)
  - Private Planned Enclosure (FIE 32) with surviving time depth

**NOTES**  
Reproduced from Ordnance Survey digital map data © Crown copyright (2025). All rights reserved. Ordnance Survey Licence AC000080122.

**LEGISLATION**  
Regulation 5(2)(a) Infrastructure Planning (Applications: Prescribed Forms and Procedure) Regulations 2009.

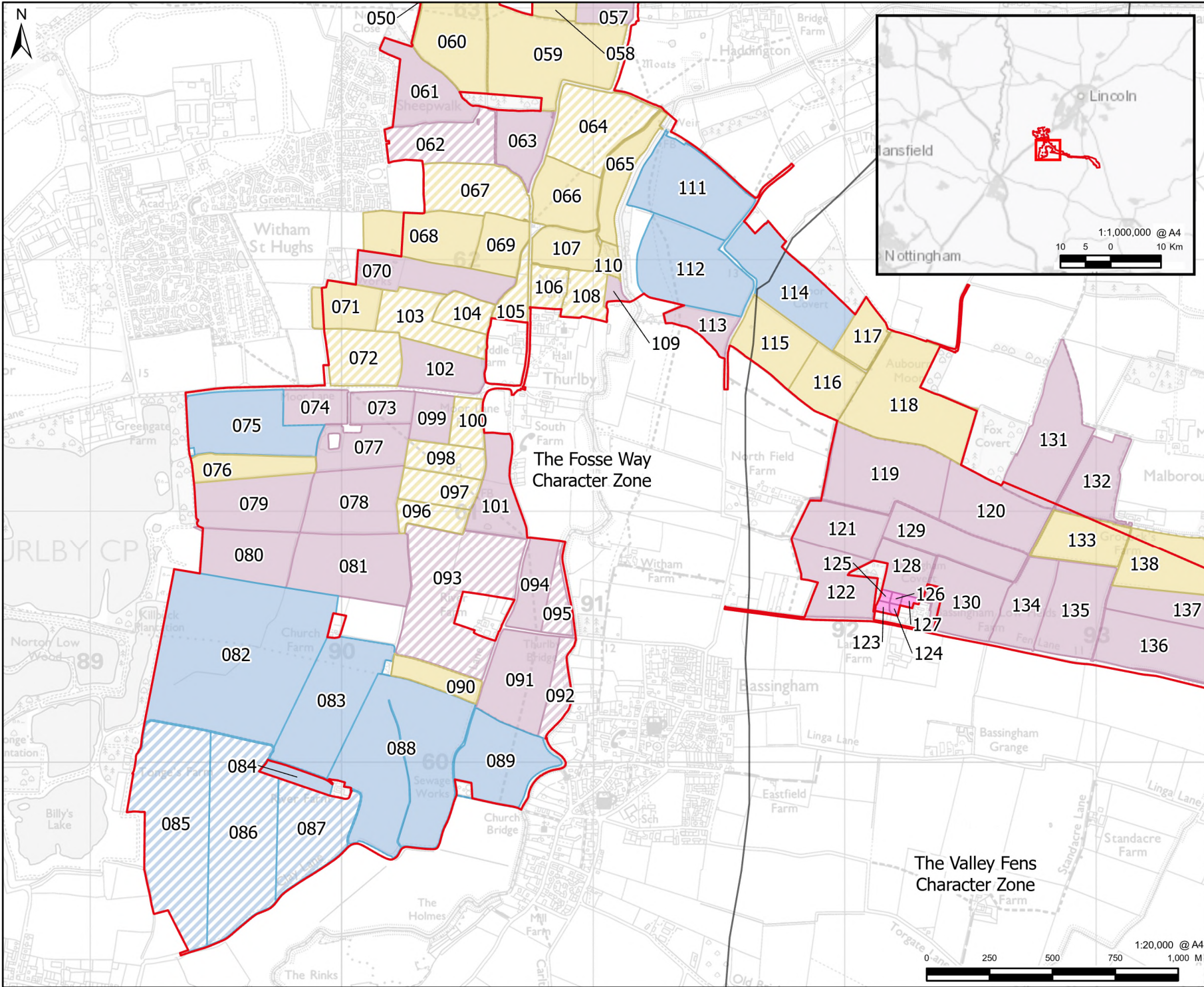
**ISSUE PURPOSE**  
DCO Submission

**FIGURE TITLE**  
HLC Character Areas within the Principal Site

FIGURE NUMBER	REV.
Figure 7-E-2a	01

**DOCUMENT REFERENCE**  
EN010154/APP/6.3





**PROJECT**

Fosse Green Energy

**CLIENT**

Fosse Green Energy Ltd

**CONSULTANT**

AECOM Limited  
Sunley House  
4 Bedford Park  
Surrey, CR0 2AP, UK  
www.aecom.com

**LEGEND**

- DCO Site
- Re-organised Piecemeal Enclosure (FIE 27)
- Re-organised Piecemeal Enclosure (FIE 27) with surviving time depth
- Parliamentary Planned Enclosure (FIE 28)
- Parliamentary Planned Enclosure (FIE 28) with surviving time depth
- Modern Fields (FIE 29)
- Modern Fields (FIE 29) with surviving time depth
- Paddocks and Closes (FIE 30)
- Private Planned Enclosure (FIE 32)
- Private Planned Enclosure (FIE 32) with surviving time depth

**NOTES**

Reproduced from Ordnance Survey digital map data © Crown copyright (2025). All rights reserved. Ordnance Survey Licence AC000808122.

**LEGISLATION**

Regulation 5(2)(a) Infrastructure Planning (Applications: Prescribed Forms and Procedure) Regulations 2009.

**ISSUE PURPOSE**

DCO Submission

**FIGURE TITLE**

HLC Character Areas within the Principal Site

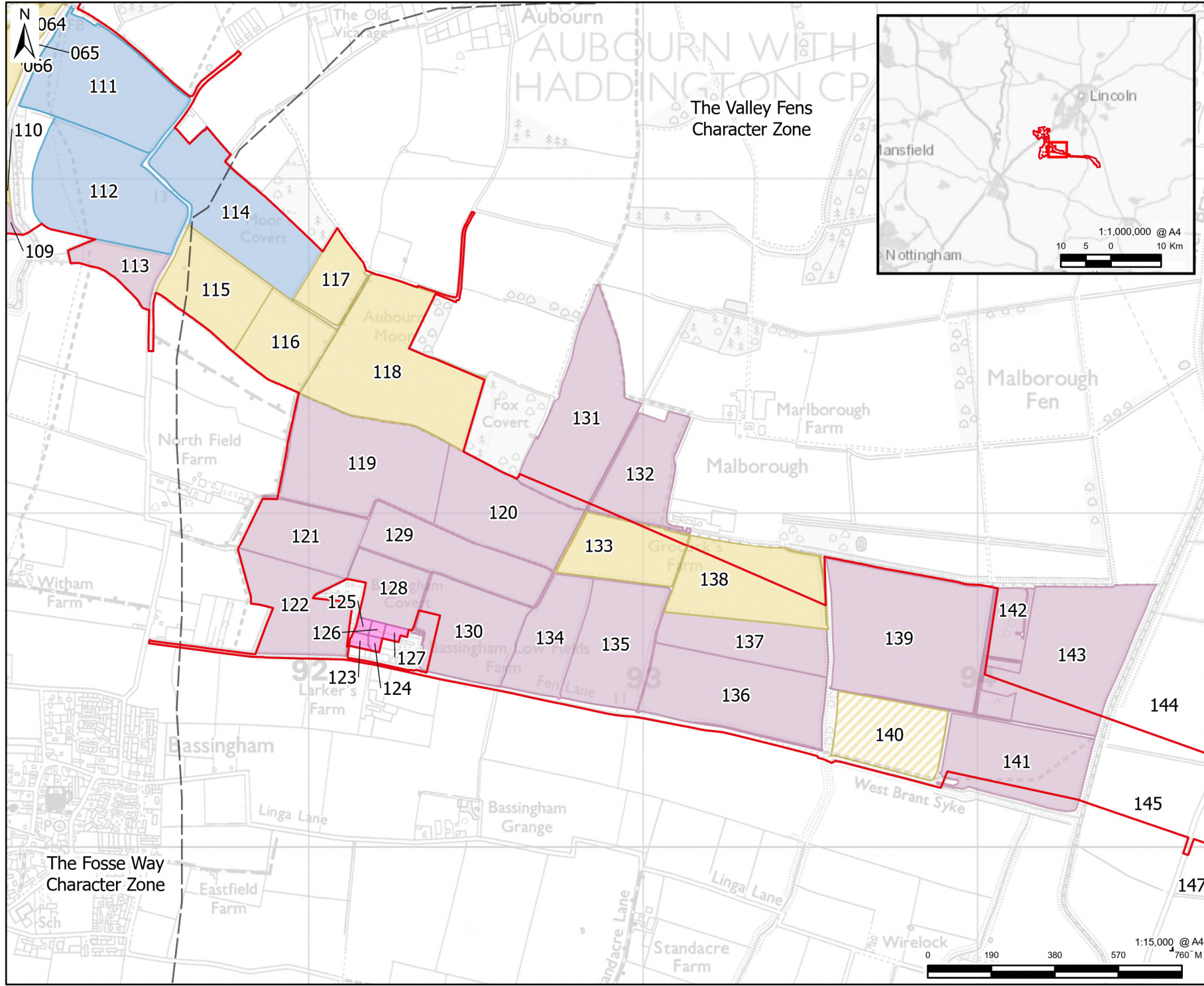
**FIGURE NUMBER** **REV.**

Figure 7-E-2b 01

**DOCUMENT REFERENCE**

EN010154/APP/6.3





**PROJECT**  
Fosse Green Energy

**CLIENT**  
Fosse Green Energy Ltd

**CONSULTANT**  
AECOM Limited  
Sunley House  
4 Bedford Park  
Surrey, CR0 2AP, UK  
www.aecom.com

- LEGEND**
- DCO Site
  - Re-organised Piecemeal Enclosure (FIE 27)
  - Re-organised Piecemeal Enclosure (FIE 27) with surviving time depth
  - Parliamentary Planned Enclosure (FIE 28)
  - Parliamentary Planned Enclosure (FIE 28) with surviving time depth
  - Modern Fields (FIE 29)
  - Modern Fields (FIE 29) with surviving time depth
  - Paddocks and Closes (FIE 30)
  - Private Planned Enclosure (FIE 32)
  - Private Planned Enclosure (FIE 32) with surviving time depth

**NOTES**  
Reproduced from Ordnance Survey digital map data © Crown copyright (2025). All rights reserved. Ordnance Survey Licence AC0000808122.

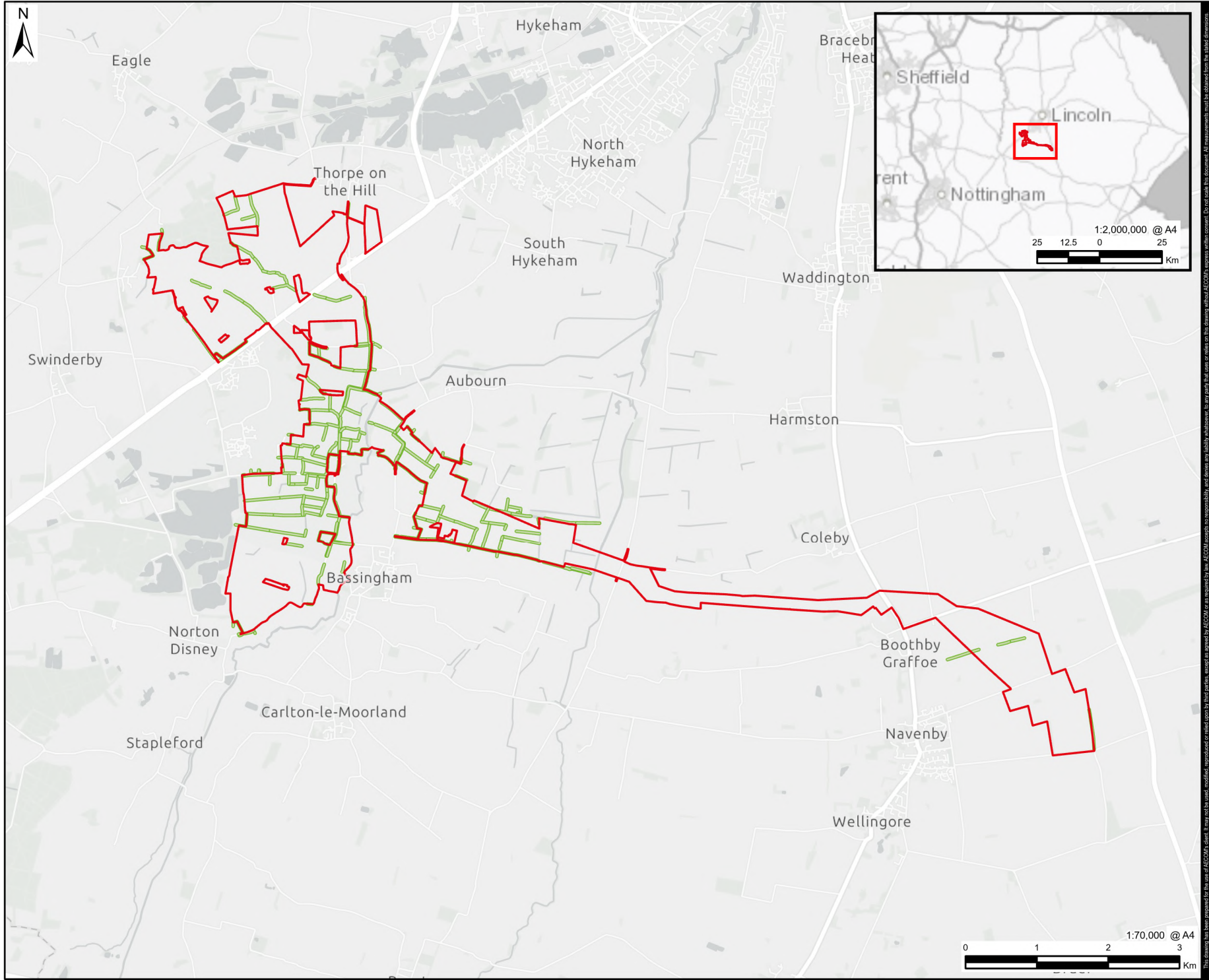
**LEGISLATION**  
Regulation 5(2)(a) Infrastructure Planning (Applications: Prescribed Forms and Procedure) Regulations 2009.

**ISSUE PURPOSE**  
DCO Submission

**FIGURE TITLE**  
HLC Character Areas within the Principal Site

FIGURE NUMBER	REV.
Figure 7-E-2c	01

**DOCUMENT REFERENCE**  
EN010154/APP/6.3



**PROJECT**  
Fosse Green Energy

**CLIENT**  
Fosse Green Energy Ltd

**CONSULTANT**  
AECOM Limited  
Sunley House  
4 Bedford Park  
Surrey, CR0 2AP, UK  
www.aecom.com

**LEGEND**  
 DCO Site  
 Important Hedgerows

**NOTES**  
Reproduced from Ordnance Survey digital map data © Crown copyright (2025). All rights reserved. Ordnance Survey Licence AC0000808122.

**LEGISLATION**  
Regulation 5(2)(a) Infrastructure Planning (Applications: Prescribed Forms and Procedure) Regulations 2009.

**ISSUE PURPOSE**  
DCO Submission

**FIGURE TITLE**  
Important Hedgerows within the Site

FIGURE NUMBER	REV.
Figure 7-E-3	01

**DOCUMENT REFERENCE**  
EN010154/APP/6.3